



FEDANSA WESTERN CAPE PAB

PRESENTS

BALLROOM AND LATIN FESTIVAL ON

SATURDAY, 31 OCTOBER 2009

RETREAT CIVIC, RETREAT

ADJUDICATORS

RANDALL RAUBENHEIMER
CHERVON SMALLBERG
MABUSE

D.J.
SCRUTINEER
M.C.

TERRY MESINA
ARTHUR ISAACS
VIVIER NEL

Entry Fees

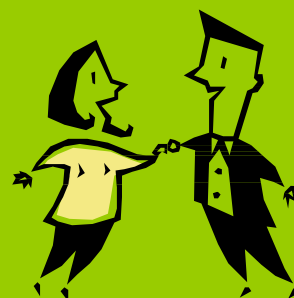
Juv. /Jun R50 per couple
Youth/Adult R60 per couple
Professionals R100 per couple

Admission Fees

Under 16 @ R30 per person
Youth & Adult R40 per person

Entry fees to be paid directly into:

Bank: STANDARD BANK
Name: Fedansa Western Cape
Account No: 072936169
Branch: Kromboom
Type: Cheque
Bank Code: 026209



Closing date for entries ,MONDAY,26 OCTOBER 2009

*Entry's with copies of deposit slips to be faxed to
M. WYNGAARDT
Fax No: 0865597709*

Professional Purse: DEPENDING ON ENTRIES IN THE SECTION

Doors open:

SATURDAY @ 09H00 START

NB. There will be a disabled section and Professional section for those athletes belonging to the organization.

CONDITIONS OF ENTRY

1. Registration and Entries

- All dancers must be registered members of FEDANSA for the current year.
- All entries must be accompanied by a proof of payment slip. Please write the name of the club/studio on the bank slip.
- Entries received without proof of deposit will NOT be accepted.
- Entries may only be submitted on the official competition entry form.
- Sections will be combined or cancelled if insufficient entries are received, in accordance with the rules.

• Registration times for athletes

Saturday:	All Girls and Special sections:	8h00 for 9h00 start
	Juvenile & Junior level 1-level 4 Standard	9h30 for 10h00 start
	Juvenile & Junior level 1-level 4 Latin	11h30 for 12h00 start
	Youth & Adult level 1 – level 4 Standard	14h00 for 14h30 start
	Jun./Youth/Adult Novice Standard	15h30 for 16h00 start
	Jun./Youth/ Adult Novice Latin	17h30 for 18h00 start
	Pre-Champ and Championship Standard	18h00 till late

2. Syllabus and Dress Code

- **NATIONAL SYLLABUS & DRESS CODE WILL BE STRICTLY ENFORCED.**

3. Strictly No Smoking Allowed

- Smoking is strictly forbidden in all areas of the venue!
- The venue operators will impose a R2000 fine on anyone caught smoking in the venue.

4. Cloth number

- When entering the athlete the Fedansa cloth number must be written in the allocated space on entry form.

5. General

- By entering the competition, the competitors agree to abide by FEDANSA National rules.
- The organizers are NOT responsible for any injury or loss of property incurred by any competitor or spectator.
 - Right of admission to the competition is strictly reserved.

ENTRY FORM**BALLROOM & LATIN AMERICAN FESTIVAL**

Page >>

31ST OCTOBER 2009 AT THE RETREAT CIVIC, RETREAT**FILL THIS IN >>****Contact Person:****Tel. No:****Studio Name:****Province:**

	Cloth	Male Name	Female Name	Age Group	Standard Grade	Latin Grade	Amount
e.g.	155	R. KANNEMEYER	R. RONDAWEL	YOUTH	Pre-Champ	Championship	R100
1.							
2.							
3.							
4.							
5.							
6.							
7.							
8.							
9.							
10.							
11.							
12.							
13.							
14.							
15.							

Total Entry Fees Due >>**Table seats (T) >>****Total Amount to Deposit>>****Deposit Date**

R

R

R

Closing date....
26 OCTOBER
2009

